



HYDRO-PRO 150 AUTOMATIC WATER SAVER SPRAY NOZZLE MAINTENANCE INSTRUCTIONS

If Strahman Hydro-Pro 150 begins to leak or the renewable cover becomes worn, follow the procedures below to repair it. For Part identification, please refer to the drawing and parts list on reverse side. For best results and to ensure reliability order original Strahman replacement parts.



RENEWABLE COVER REPLACEMENT

If the renewable cover (No.2) becomes worn or cracked, follow the steps below to replace it.

1.Disassemble the renewable cover (No.2) by loosening and removing the six cover screws (No. 4-not shown).

2.Lift the body (No. 1) free of the cover (No.2). Remove the ratchet assembly hinge (No.3), ratchet (No. 5), ratchet spring (No.13) and spring pin (No.14).

3.Install the body (No.1) and ratchet assembly-hinge (No.3) ratchet (No.5), ratchet spring (No.13) and spring pin (No.14) in the new renewable cover (No.2). Reinstall the six cover screws (No.4-not shown).

If the Hydro-Pro 150 begins to leak from the seat (No. 15) or rear of the body (no.1) follow the steps below.

1.Disassemble the renewable cover (No. 2) by loosening and removing the six cover screws (No4 - not shown).

2.Lift the body (No. 1) free of the cover (No.2). Remove the ratchet assembly hinge (No.3), ratchet (No. 5), ratchet spring (No.13) and spring pin (No.14). Place the body in boiling water for 2-3 minutes to release the Loc-Tite bond on stem screw (No. 12). Remove the stem screw and swivel the u-bracket (no. 18) down or up away from the stem (No. 9).

3.Remove the snap rings (No. 7) from the front and rear of the water saver body (No.1). Push on the rear of the stem (No.9) until the seat (No.15) stem and stem spring (No. 10) are free of the body.

4.Carefully press the housing (No.8) out of the rear of the water saver body (No. 1) Precautions should be take to avoid damaging the inside of the water saver body.

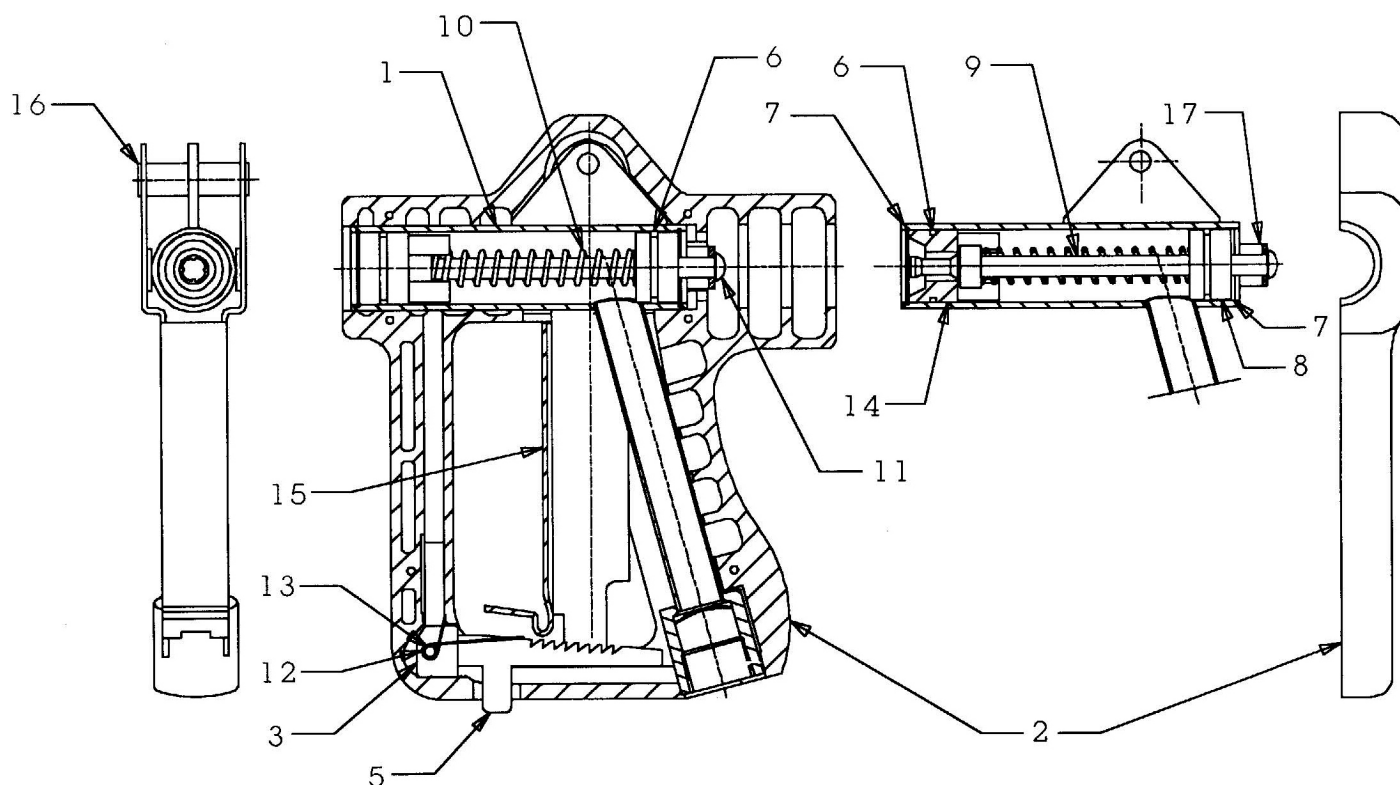
5.Install a new "O-ring" (No.6) on the seat (No.15). Install a new "O-ring" (No.6) on the new housing (No.8).

6.Install seat (No.15) and snap-ring (No.7) in the front of the water saver body (No.1) Install the stem (No.9) and then stem spring (No.10) from the rear of the water saver body.

7.Install the housing (No.8) in the rear of the body and compress the stem spring (No. 10). Install a snap ring (No. 7) in the rear of the water saver body.

8.Swivel the u-bracket (No.18) back into place over the end of the stem (No.9). Apply Loc-Tite 271 to the stem screw (No. 12) and reinstall.

9.Replace the renewable cover (No.2) if worn, place the body (No. 1) and hinge (No.3) back into the cover. Reassemble the cover and reinstall the cover screws (No. 4-not shown).



No.	Description
01	Hydro-Pro Body
02	Renewable cover (Set)
03	Hinge
04	Cover Screw (Not Shown)
05	Ratchet
06	O-Ring
07	Snap Ring
08	Housing
09	Stem
10	Stem Spring
11	Stem Screw and Washer
12	Ratchet Spring
13	Spring Pin
14	Seat
15	Lever Arm
16	Lever Arm Pivot
17	U-Bracket

SERVICE KIT

To repair your Hydro-Pro 150 order the Strahman service kit for Hydro-pro Water Saver.

Each kit contains the following parts:

- 2 O-rings
- 1 Snap Ring
- 1 Renewable Cover (Set)
- 1 Housing
- 1 Stem
- 6 Cover Screws

Each kit will repair one Hydro-Pro 150.

Last Updated: May 26, 2009