

# LES PACKAGED WATER HEATER



## FEATURES

---

- Compact size
- Flows to 330 GPM
- Steam or HTHW as heating source
- SS tank
- $\pm 5^{\circ}\text{F}$  accuracy
- Industrial quality steam control valve
- Coil can be removed without disturbing heater

## OPTIONS

---

- Double wall coils
- Vacuum breaker
- 235 MAWP pressure rating

## APPLICATION DATA

---

- Hospital patient and domestic hot water
- Industrial shower rooms
- Building heat
- University dormitories

## RATINGS

---

**Shell:** 150 psi

**Tubes:** 150 psi

SIZING INFORMATION  
SEE PAGE 34

# LES PACKAGED WATER HEATER

## SPECIFICATIONS

For specifying a LES Series Steam-Fired Water Heater, select the model(s) from the charts provided and use the specifications covered below. Contact you local Leslie representative or consult the factory.

Heater shall be Leslie Series "LES" factory assembled and packaged, rated to heat specified GPM of water from \_\_\_\_\_ to \_\_\_\_\_°F, temperature rise and control the outlet within  $\pm 5^{\circ}\text{F}$  of the selected temperature when supplied with \_\_\_\_\_ psig saturated steam before the control valve. The packaged water heater shall be constructed with a 316L Stainless Steel tank, with Stainless Steel threaded openings, copper coil, 1/2" tubes, copper lined tube sheet and fabricated steel steam chamber.

Heater shall be mounted on a steel support skid and shall have lifting lugs. Heater shall be foam insulated and protected by an enameled metal jacket, 20 gauge minimum thickness. Heater shall be factory assembled and piped including:

Steam Units - Incoming steam strainer, pneumatic control valve, main and auxiliary float and thermostatic steam traps.

Coil shall be baffled and shall have an integral bronze valve circulator with shut off valves to circulate the water across the coil.

Heater shall be furnished with A.S.M.E. pressure-temperature relief valve of sufficient size to relieve total BTU input of the coil, water thermometer, water pressure gauge and steam pressure gauge.

For Vertical - Heater shall be Leslie Controls, Inc. Model V \_\_\_\_\_ LES \_\_\_\_\_

For Horizontal - Heater shall be Leslie Controls, Inc. Model H \_\_\_\_\_ LES \_\_\_\_\_

## MATERIALS OF CONSTRUCTION

Coil: Standard .....Copper  
Optional .....Cupro-nickel, Stainless Steel  
Shell: .....316 L SS  
Piping:.....Copper  
Circulating Pump: .....Bronze

## BASIC LES PACKAGE COMPONENTS:

Compact size  
A.S.M.E. Code constructed National Board registered storage tank  
Pressure Rating 150 psig (10 bar)  
316-L Stainless steel tanks  
316-L Stainless steel threaded connections  
2" (5 cm) Foam insulation  
20 Gauge steel jacket with hammertone enamel paint  
Structural steel base  
A.S.M.E. relief valve-pressure and temperature  
Digital thermometer  
Water pressure gauge  
Drain Valve  
Copper U-Bend heating coil, rolled into copper lined tube sheet  
Integral bronze circulator  
High temperature cutoff  
Double safety solenoid system

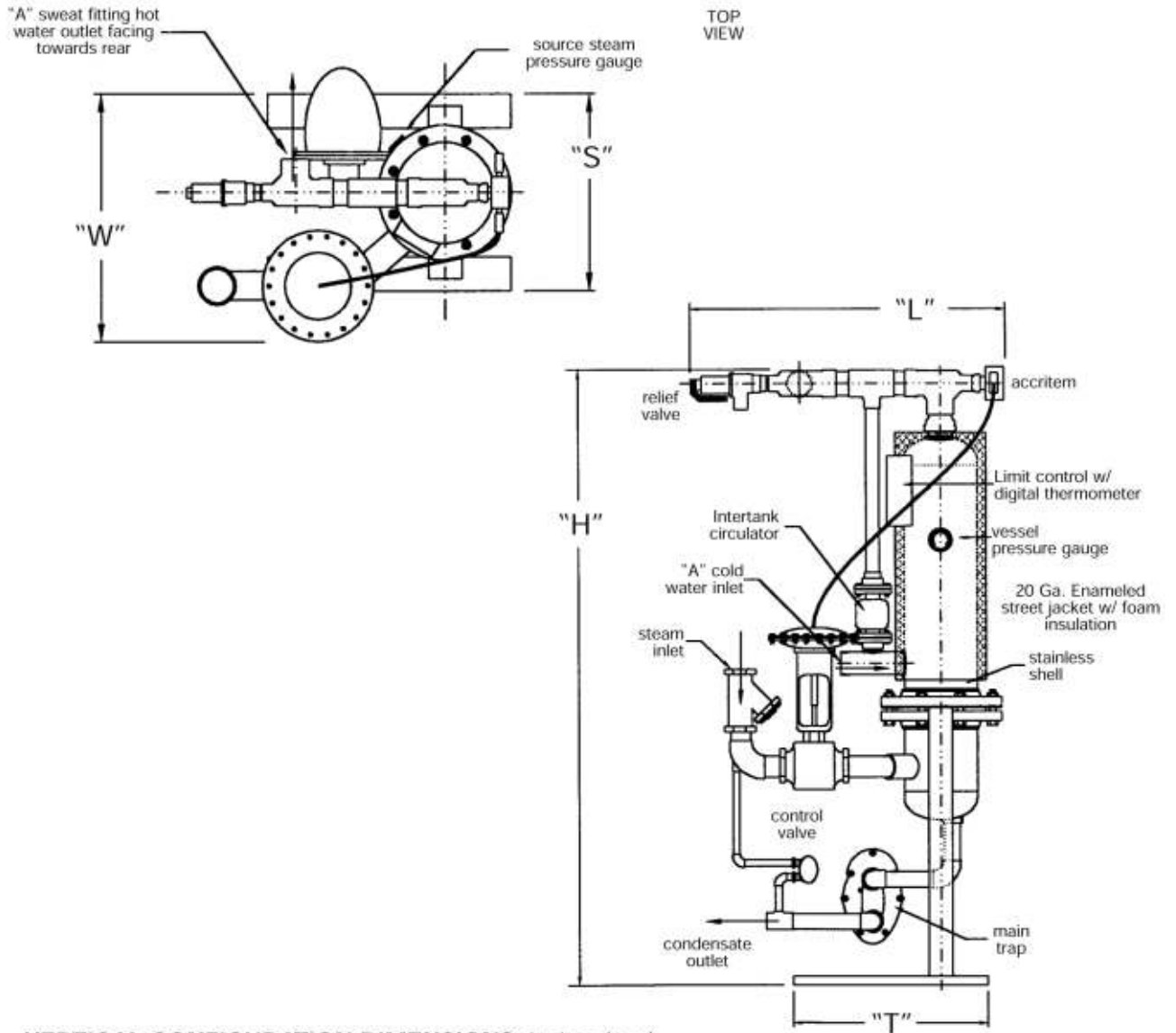
## STANDARD STEAM PACKAGE COMPONENTS:

Steam temperature control valve  
Steam traps-main inlet and auxiliary  
Steam stainer, inlet  
Steam pressure gauge

## STANDARD BOILER WATER/HIGH TEMPERATURE HOT WATER PACKAGE COMPONENTS:

Boiler water control valve (Two way or three way)  
Boiler water temperature gauge  
High temperature hot water units with 90:10 CuNi tubing.  
400 psi (27 bar) maximum pressure

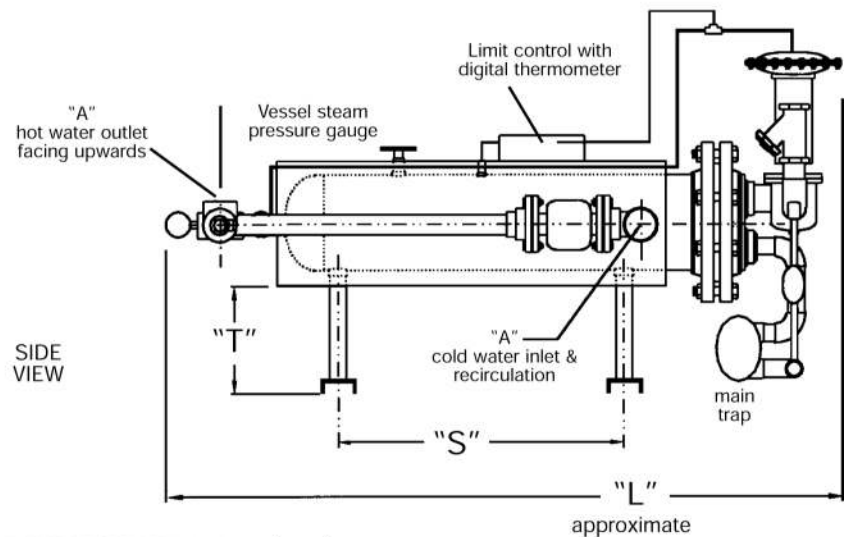
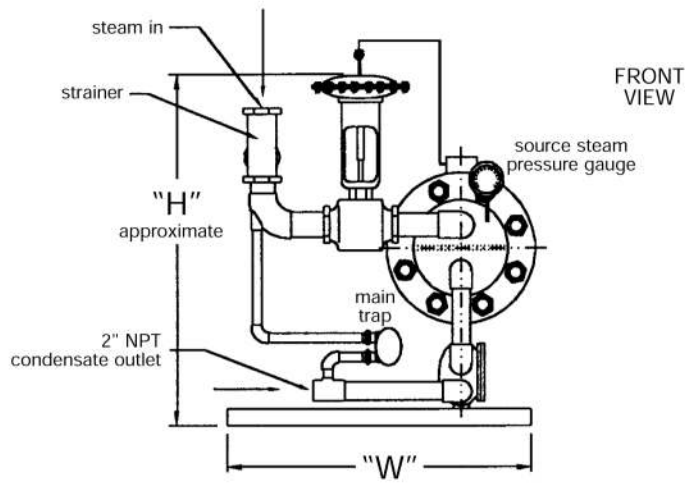
# LES PACKAGED WATER HEATER DIMENSIONS - VERTICAL



**VERTICAL CONFIGURATION DIMENSIONS** inches (mm)

Model #	H	L	W	S	T	A
V6LES624	62 (1575)	20 (508)	24 (610)	18½ (476)	24 (610)	2 (51)
V8LES820	74 (1880)	24 (610)	25 (635)	21½ (540)	30 (762)	2½ (64)
V8LES830	74 (1880)	24 (610)	25 (635)	21½ (540)	30 (762)	2½ (64)
V10LES1030	74 (1880)	28 (711)	29 (737)	23½ (603)	32 (813)	2½ (64)
V10LES1036	86 (2184)	30 (762)	29 (737)	23½ (603)	32 (813)	3 (76)
V12LES1236	86 (2184)	32 (813)	32 (813)	26½ (679)	34 (864)	3 (76)
V12LES1242	100 (2540)	34 (864)	32 (813)	26½ (679)	34 (864)	3 (76)
V14LES1442	100 (2540)	34 (864)	34 (864)	28½ (730)	36 (914)	4 - 150# flange (102)

# LES PACKAGED WATER HEATER DIMENSIONS - HORIZONTAL



**HORIZONTAL CONFIGURATION DIMENSIONS** inches (mm)

Model #	H	L	W	S	T	A
H6LES624	38 (965)	50 (1270)	25 (635)	14 (356)	15 (381)	2 (51)
H8LES820	40 (1016)	56 (1422)	29 (737)	17½ (445)	15 (381)	2½ (64)
H8LES830	40 (1016)	56 (1422)	29 (737)	17½ (445)	15 (381)	2½ (64)
H10LES1030	42 (1067)	56 (1422)	29 (737)	17 (432)	15 (381)	2½ (64)
H10LES1036	42 (1067)	62 (1575)	29 (737)	23 (584)	15 (381)	3 (76)
H12LES1236	48 (1219)	62 (1575)	31 (787)	23 (584)	15 (381)	3 (76)
H12LES1242	48 (1219)	68 (1727)	31 (787)	28¾ (730)	15 (381)	3 (76)
H14LES1442	54 (1372)	68 (1727)	35 (889)	26¾ (676)	15 (381)	4 - 150# flange (102)