

WPT-Series Pump-Trap Combinations simplify Selection & Installation of Pressure Motive Pumps

- 3 size ranges available
- Up to 13,000 lbs/hr of condensate load

WPT3 • 1 1/2 x 1 1/2

(PMPLS with 2" FTE-200 Steam Trap)

Typical Applications

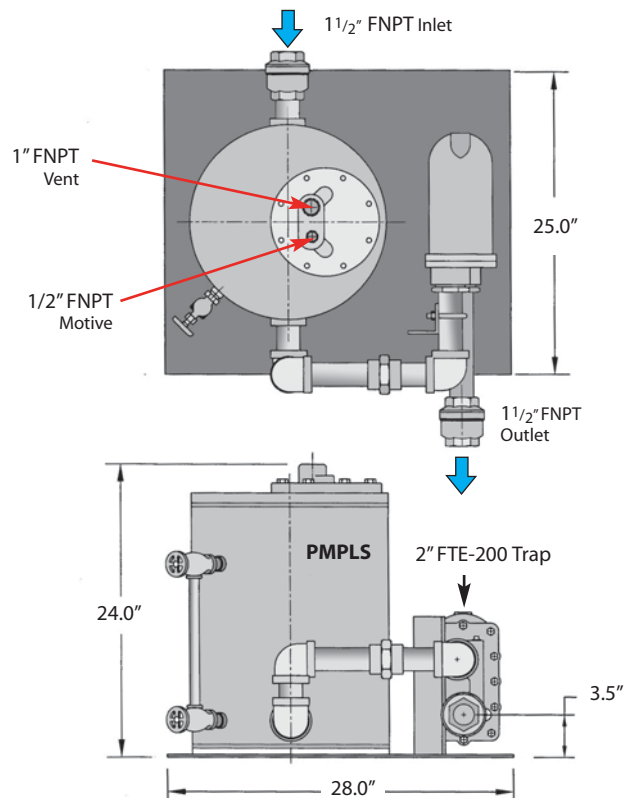
WPT Pump-Trap Combinations are excellent for draining condensate from heat exchangers and other equipment whose steam pressure is modulated by a temperature regulator or a temperature control valve. In these applications the steam pressure in the heat exchanger may not be sufficient to overcome the back pressure in the condensate return line. When this condition occurs, the pressure powered pump takes over and uses high pressure steam supplied to the pump to discharge the condensate. When sufficient pressure does exist, the WPT functions like a standard steam trap.

Pump-Traps facilitate condensate discharge under all operating conditions, including vacuum.

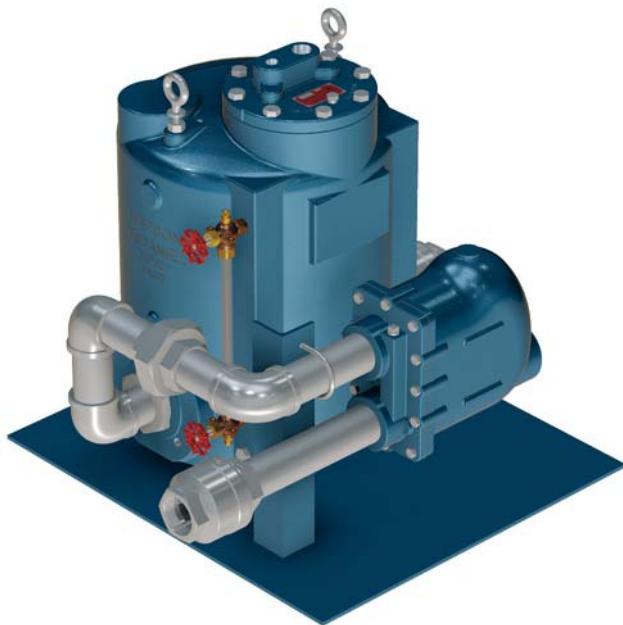
Pump-Trap Features

- Pump and Steam Trap are pre-mounted together on a single base for easy installation
- Higher capacities than Pump-Trap combinations with internal steam traps (PMPT)
- Engineering and selection is simplified using a pre-mounted system

NOTE: Reservoir - Pump-Trap Combination may require a reservoir above the pump to collect condensate generated in the heat exchanger during the discharge cycle of the pump. Consult Reservoir Sizing Guidelines or contact factory for additional information.

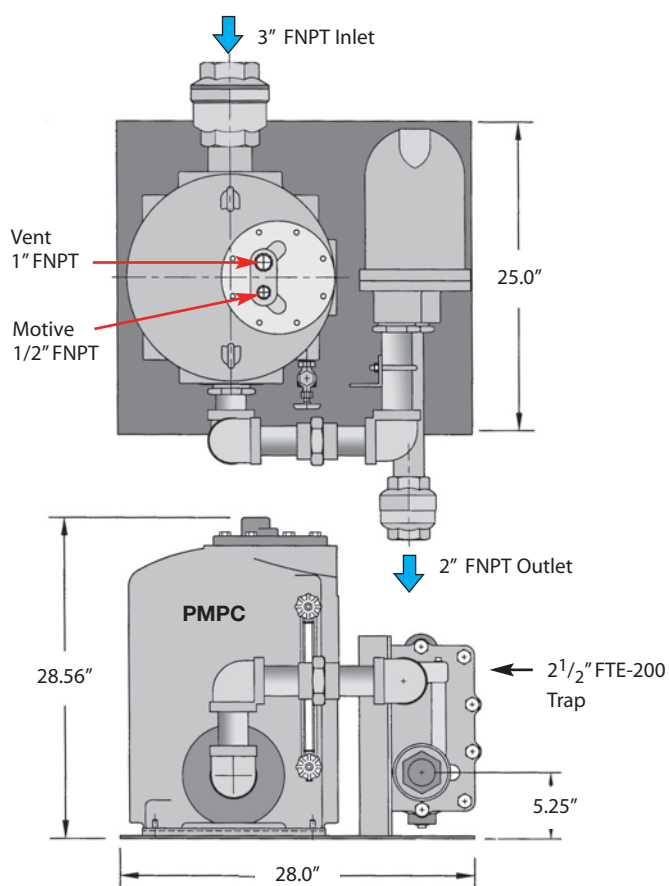
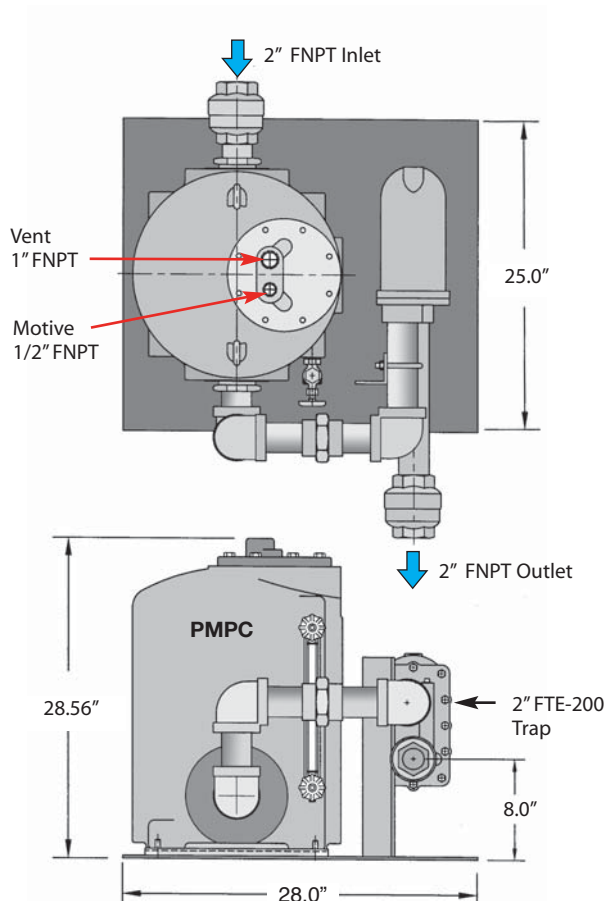


MATERIALS	WPT3		WPT4		WPT5	
	Pump	Trap	Pump	Trap	Pump	Trap
Body	Carbon Steel	Ductile Iron SA-395	Ductile Iron SA-395	Ductile Iron SA-395	Ductile Iron SA-395	Ductile Iron SA-395
Cover	Carbon Steel	Ductile Iron SA-395	Ductile Iron SA-395	Ductile Iron SA-395	Ductile Iron SA-395	Ductile Iron SA-395
Cover Gasket	Garlock	Garlock	Garlock	Garlock	Garlock	Garlock
Cover Bolts	Steel	Steel	Steel	Steel	Steel	Steel
Inlet Valve	17-4 Ph SS 40 Rc	n/a	17-4 Ph SS 40 Rc	n/a	17-4 Ph SS 40 Rc	n/a
Vent Valve	17-4 Ph SS 40 Rc	n/a	17-4 Ph SS 40 Rc	n/a	17-4 Ph SS 40 Rc	n/a
Ball Float	304 SS	304 SS	304 SS	304 SS	304 SS	304 SS
Check Valves	316 SS	n/a	316 SS	n/a	316 SS	n/a
Springs	Inconel-X-750	n/a	Inconel-X-750	n/a	Inconel-X-750	n/a
Other Internal Components	Stainless Steel	Stainless Steel	Stainless Steel	Stainless Steel	Stainless Steel	Stainless Steel



WPT4 • 2" x 2"
 (PMPC with 2" FTE-200 Steam Trap)

WPT5 • 3" x 2"
 (PMPC with 2 1/2" FTE-200 Steam Trap)



PMPT & WPT Pump-Trap Combinations (Operating in **Pump** Mode)

PUMPING TRAPS

PUMP CAPACITIES – Condensate (lbs/hr); using steam as a motive pressure						
Motive Pressure (PSIG)	Total Back Pressure (PSIG)	PMPT 1" x 1" 6" Fill Head	PMPT 1 1/2" x 1 1/2" 6" Fill Head	WPT3 1 1/2" x 1 1/2" 12" Fill Head	WPT4 2" x 2" 12" Fill Head	WPT5 3" x 2" 12" Fill Head
5	2	1,064	1,850	1,310	2,320	4,270
10	5	1,049	1,824	1,760	3,740	6,230
10	2	1,200	2,087	2,350	5,640	9,450
25	15	1,026	1,784	2,700	4,690	7,230
25	10	1,151	2,002	3,020	5,970	9,370
25	5	1,257	2,186	3,780	6,850	11,400
50	40	877	1,525	2,090	3,410	5,040
50	25	1,115	1,939	3,620	6,650	10,200
50	10	1,286	2,237	4,080	7,140	11,500
75	60	882	1,533	2,250	3,730	5,660
75	40	1,102	1,916	3,470	6,010	8,770
75	15	1,298	2,257	4,390	7,920	12,400
100	80	884	1,538	2,620	4,390	6,140
100	60	1,058	1,841	3,390	5,780	8,120
100	40	1,192	2,074	4,310	6,940	10,000
100	15	1,331	2,314	4,620	8,000	12,300
125	115	737	1,281	2,280	3,490	4,440
125	100	886	1,541	2,880	4,420	5,720
125	80	1,030	1,792	3,520	5,700	7,630
125	60	1,146	1,992	4,110	6,880	9,390
125	40	1,243	2,161	4,910	7,800	11,100
125	15	1,351	2,350	5,120	8,420	12,900
150	120	-	-	2,560	3,640	5,100
150	100	-	-	3,020	4,610	6,270
150	80	-	-	3,630	5,780	8,140
150	60	-	-	4,230	6,910	9,920
150	40	-	-	4,830	7,930	11,700
150	15	-	-	5,230	8,590	13,300

PMPT & WPT Pump-Trap Combinations (Operating in **Trap** Mode)

TRAP CAPACITIES – Condensate (lbs/hr)			
Differential Pressure (PSI)	PMPT	WPT3 & WPT4	WPT5
1/4	1,511	2,770	7,200
1/2	2,137	4,100	12,300
1	3,020	5,700	17,400
2	4,030	7,400	25,400
5	4,354	9,900	27,600
10	4,841	11,800	32,600
15	5,150	13,400	36,000
20	5,686	14,400	39,300
30	6,425	16,400	43,100
40	7,711	18,000	46,600
50	8,000	19,000	49,200
75	9,100	21,000	54,700
100	10,334	23,000	58,800
125	11,451	24,500	61,900
200	NA	29,200	74,000

Recommended Reservoir sizes for **Pump-Trap Applications**

Condensate Load (lbs/hr)	Reservoir Pipe Size (Diameter)				
	3"	4"	6"	8"	10"
0-500	2'				
1,000	2'				
1,500	3'	2'			
2,000	3.5'	2'	1'		
3,000		3'	2'		
4,000		4'	2'	1'	
5,000		6'	3'	2'	
6,000			3'	2'	
7,000			3'	2'	
8,000			4'	2'	
9,000			4.5'	3'	2'

Capacity Correction Factors for Alternate Filling Heads

Model	Filling Head					
	0"	6"	12"	18"	24"	36"
PMPT	0.70	1.00	1.16	1.28		
WPT3	0.62	0.70	1.00	1.10	1.20	1.35
WPT4	0.62	0.70	1.00	1.10	1.20	1.35
WPT5	0.70	0.84	1.00	1.10	1.08	1.20

NOTE: When the filling head differs from the standard filling height, the capacity of the pressure power pumps are either increased or decreased. For example, a WPT4 has a filling head of 24" as opposed to a standard filling head of 12", will have a capacity increase of 20%. Multiply the value found in the Capacity Table above by 1.2.